



# Part C State Performance Plan/Annual Performance Report— What You Need to Know About the Part C SPP/APR

Danielle Crain

Amy Bitterman

Sarah Walters

Date: Sept. 20, 2017

# Poll Question

Who is here? Etc...



# Outcomes

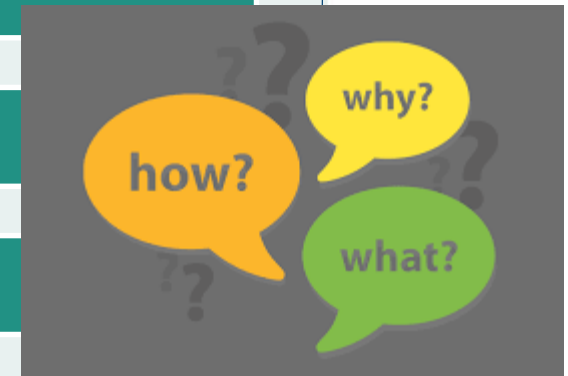
Participants will have a better understanding of

- the purpose of the SPP/APR;
- its required indicators; and
- available systems and resources to support state SPP/APR development and reporting.



# Agenda

- What is the SPP/APR and its history?
- Timelines
- Terminology
- Components
- Submission
- Pulling it all together – Jeopardy game
- Resources



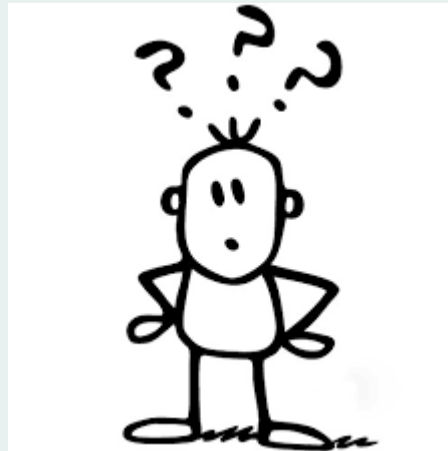
# Check-in

- Any questions so far?
- Reflection - What are your experiences with your state's SPP/APR?
- Share in the chat box.



# What is the SPP/APR?

State Performance Plan/Annual Performance Report (SPP/APR)





## What is the SPP/APR? (cont.)

- Annually, each state must have an SPP/APR that:
  - Evaluates the state's efforts to implement the requirements and purposes of Part B and Part C of the *Individuals with Disabilities Education Act* (IDEA).
  - Specifically, reports on progress in meeting the measurable and rigorous targets the state established as part of its State Performance Plan.



# Statutory Requirement

In accordance with 20 U.S.C. 1416(b)(1)(C) and 1442 of the Individuals with Disabilities Education Act (IDEA), each Lead Agency must report annually, through the Part C SPP/APR. Each Lead Agency is required to submit its Federal Fiscal Year (FFY) 2015 SPP/APR Part C Indicators 1-10 by February 1, 2017 and Indicator 11 by April 3, 2017.

- **2017 Part C SPP/APR Memo**



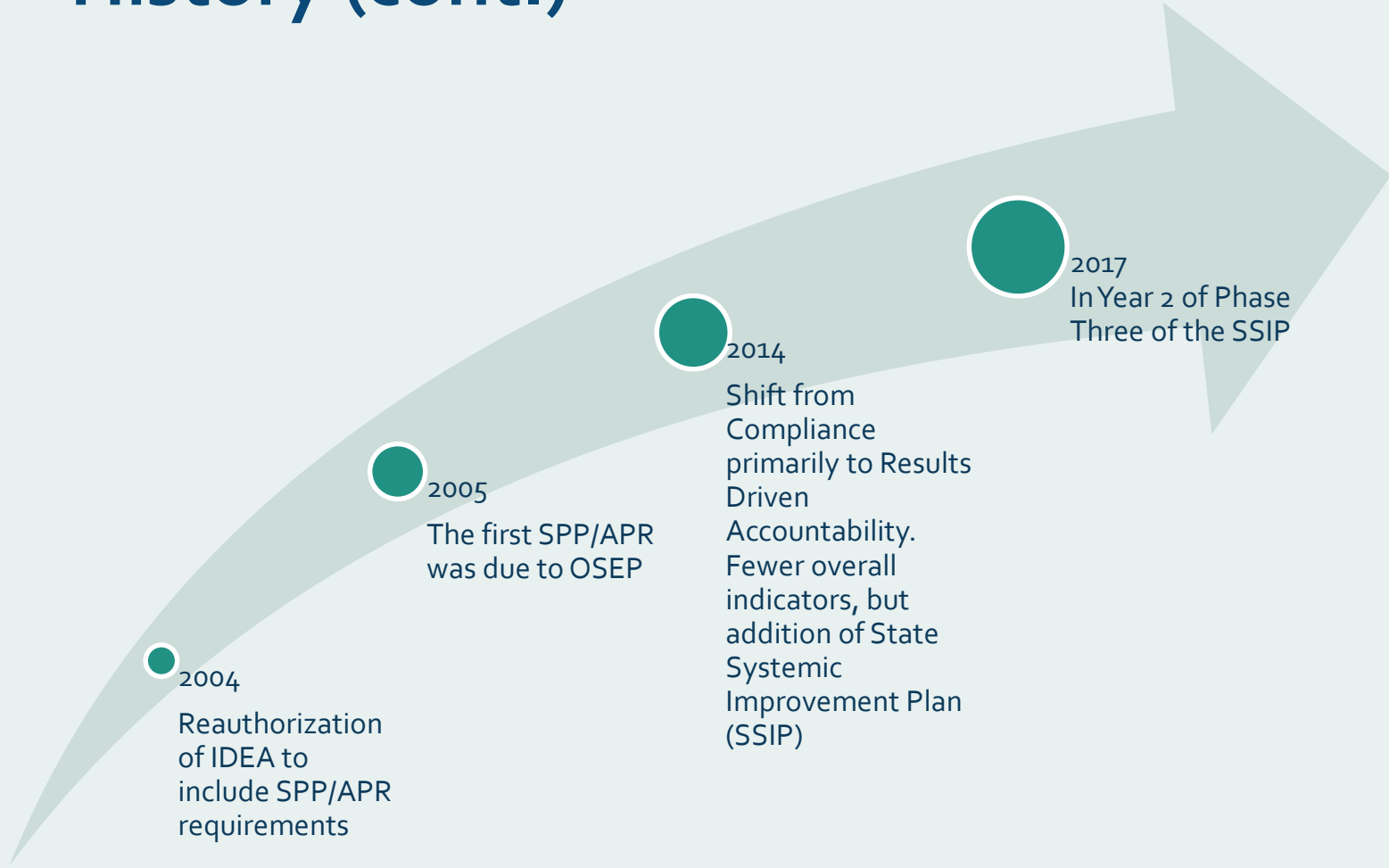
# History



- Originally two separate reports
- Focused primarily on Compliance, although the reports also included Results indicators
- Combined the SPP and the APR into one document
- Shift to Results Driven Accountability (RDA)



# History (cont.)



2004  
Reauthorization  
of IDEA to  
include SPP/APR  
requirements

2005  
The first SPP/APR  
was due to OSEP

2014  
Shift from  
Compliance  
primarily to Results  
Driven  
Accountability.  
Fewer overall  
indicators, but  
addition of State  
Systemic  
Improvement Plan  
(SSIP)

2017  
In Year 2 of Phase  
Three of the SSIP



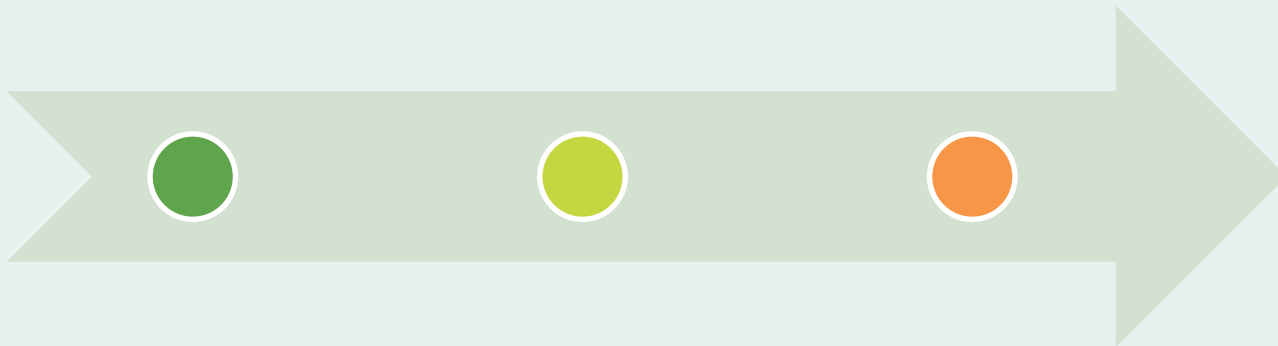
# Purpose

- SPP/APR is a written plan the Office of Special Education Programs (OSEP) designed for states to describe implementation and measurement of IDEA within the state system.
- SPP/APR content and other state data inform OSEP Determinations about whether or not the states “meet requirements” in implementing IDEA.
- The APR functions as a report for the state’s stakeholders.

# SPP/APR Timelines

The APR is due in February of every year for the previous year's performance.

- FFY2016 APR is due in February 2018 and reports FY 2016-17 performance



# Terminology

- **Compliance Indicators:** In the SPP/APR, indicators where 100% compliance is the requirement
  - **Results Indicators:** In the SPP/APR, those indicators that focus on system and child and family outcomes
- (Related terms that are often used interchangeably with results indicators are outcome indicators and performance indicators.)





## Terminology (cont.)

- **Determinations:** As required in IDEA, based on the information provided in the state's APR, information obtained through monitoring visits, and any other public information, the Department will determine if the state
  - Meets Requirements;
  - Needs Assistance;
  - Needs Intervention; or
  - Needs Substantial Intervention



# Terminology (cont.)

## ■ Determinations (cont.)

- Similarly each state makes determinations annually on the performance of LEA under Part B and each EI program under Part C.
- Factors that must be considered
  - Performance on compliance indicators
  - Whether data submitted are valid, reliable, and timely
  - Uncorrected noncompliance from other sources
  - Any audit findings
- In addition, states also could consider
  - Performance on results indicators
  - Other information

## Terminology (cont.)

- **MSIP:** The Monitoring and State Improvement Planning Division within OSEP is responsible for ensuring states' compliance with the IDEA.
- **SiMR:** State-identified Measurable Result
- **SSIP:** State Systemic Improvement Plan







## Terminology (cont.)

- **616 Data:** Section 616 of IDEA, which obliges states to report data that meets requirements for monitoring, the State Performance Plan (SPP), and the Annual Performance Report (APR)
- **618 Data:** Section 618 of IDEA, which outlines required data elements states report to OSEP. The Office of Management and Budget (OMB) approves file specifications and forms.

# Check-in



- How are you doing?
- Are there any terms you are dying know that we missed?
- Share in chat box.

# Components of SPP/APR

## 1. Introduction—including descriptions of

- General Supervision System
- Technical Assistance System
- Professional Development System
- Stakeholder Involvement
- Reporting to the Public



## 2. Baseline data for Indicators 1 through 11

- If the state is proposing to revise its baseline data for any indicator, it must provide an explanation for that revision.

## Components (cont.)



### 3. Targets

- Indicators 1 through 10, for each year the SPP covers (i.e., FFY 2013 through FFY 2018).
- Targets for Indicator 11, which cover FFY 2014 through FFY 2018.
- If the state is revising any of the targets it submitted with its 2016 submission, they must describe its stakeholder input process.

## Components (cont.)



4. Data from FFY and other responsive SPP/APR information for Indicators 1 through 11.

5. An explanation of any slippage in indicators where the state did not meet its FFY target.

6. Information to address any actions required by OSEP's response to the state's previous FFY SPP/APR, including actions related to the correction of findings of noncompliance identified by the state




## Components (cont.)

### 7. Phase III of the SSIP required by Indicator 11:

- Data Analysis
- Phase III Implementation, Analysis and Evaluation
- Stakeholder Engagement
- Additional Implementation Activities



# Components: Indicators

-  1. Timely Service Delivery  
(Compliance)
-  2. Settings  
(Result)
-  3. Child Outcomes  
(Result)

## Components: Indicators (cont.)

4.

Family Outcomes  
(Result)

5.

Child Find, Ages Birth to 1  
(Result)

6.

Child Find, Ages Birth to 3  
(Result)



## Components: Indicators (cont.)

7.

Timeliness of IFSP  
(Compliance)

8.

Early Childhood Transition  
(Compliance)

9.

Hearing Requests Resolved  
(Result)

## Components: Indicators (cont.)

**10.** Mediation Agreements  
(Result)

**11.** State Systemic Improvement  
Plan  
(Result)

Check-in



- Are you still with us?
- Any questions?



# GRADS360°



[Log In](#) or [Request Access](#)



[Home](#) | [Collaborate](#) | [Research](#)

Program: [Home](#) | [About](#) | [Highlighted Resources](#) | [SPP APR Resources](#) | [Fiscal](#) | [Grants](#) | [SSIP](#) | [TA Calls and Monthly Update](#)

## Home

[Home](#) > [Overview](#) > [Home](#)

Welcome  
**OSEP**

Office of Special Education Programs



### Welcome to the OSEP GRADS360° Site

On the OSEP GRADS360° site you can find highlighted SPP/APR resources here on home page, other OSEP material on the Publications and Tools page, and an events calendar with important dates to remember. GRADS360° will also be the platform for States to submit the IDEA Part B and Part C State Performance Plan/Annual Performance Report (SPP/APR) electronically each year.



 [Program Office Links](#)



## Accessing GRADS360°

- To request access, please send an email to [Eden\\_ss@ed.gov](mailto:Eden_ss@ed.gov) with the following information
  - Your Name and Title
  - Your State or Entity
  - Whether you need access to IDEA Part B, IDEA PART C, or both
  - Why you need access
- In the message, please copy your state or entity's data manager or current authorized user, if applicable.



# Submission



OSEP | State Users' Guide

[GRADS 360 OSEP State User's Guide](#)

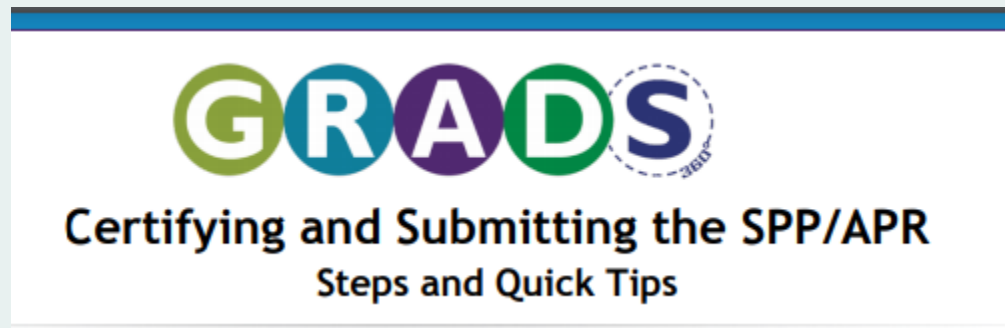
# Submission (cont.)



**OSEP SPP/APR Online Submission Module**  
Part C Collection Tools

OSEP SPP/APR Online Submission Module  
Part C Collection Tools

## Submission (cont.)



[Certifying and Submitting the SPP/APR Steps and Quick Tips](#)





# Submission GRADS 360 SPP/APR Resources



Home Collaborate Research

Program: Home | About | Highlighted Resources | **SPP APR Resources** | Fiscal | Grants | SSIP | TA Calls and Monthly Update

## SPP APR Resources

Home > Overview > SPP APR Resources

### Part B

- [Part B 2017 SPP/APR Memo](#)
- [Part B 2017 Measurement Table](#)
- [Part B 2017 SPP/APR Instructions](#)
- [Part B 2017 Related Requirements](#)
- [Part B SPP/APR 2017 Indicator Analyses](#)

### Part C

- [Part C 2017 SPP/APR Memo](#)
- [Part C 2017 Measurement Table](#)
- [Part C 2017 SPP/APR Instructions](#)
- [Part C 2017 Related Requirements](#)
- [Part C 2017 ICC Form](#)
- [Part C SPP/APR 2017 Indicator Analyses](#)
- [National Data Part C Indicators 5 & 6](#)

### Program Office Links

[Find Your State Contact](#)

[Building the Legacy: IDEA 2004](#)

# Submission



## Whom to Call for Help

- If you need assistance or have questions on using GRADS360°, please contact 1-877-457-3336 or [Eden\\_ss@ed.gov](mailto:Eden_ss@ed.gov).
- For SPP/APR-specific help, please contact [sppaprsupport@grads360.org](mailto:sppaprsupport@grads360.org).

# Check-in



- What are your experiences in working in GRADS360°?
- Share in chat box.



# JEOPARDY

SPP/APR Edition





# Resources

## IDEA Data Center Part C SPP/APR Resource Library

- Search “Part C SPP/APR”
- IDEA Part C Data Training Modules
- Part C SPP/APR Indicator Cards

### IDC IDEA DATA CENTER Building Capacity for High-Quality IDEA Data

#### Part C SPP Indicators

- 1. Timely Service Delivery.** % of infants/toddlers with IFSPs receiving EI services on their IFSPs in a timely manner.
- 2. Settings.** % of infants/toddlers with IFSPs primarily receiving EI services in the home or community-based settings.
- 3. Child Outcomes.** % of infants/toddlers with IFSPs demonstrating improved (A) Positive social-emotional skills, (B) Acquisition and use of knowledge and skills, (C) Use of appropriate behaviors to meet their needs.  
Summary Statement 1: % of infants/toddlers with substantial increase in rate of growth in each outcome by age 3 or exit, divided by all infants/toddlers who entered/exited EI below age level.  
Summary Statement 2: % of infants/toddlers within age expectations in each outcome by age 3 or program exit.
- 4. Family Outcomes.** % of families reporting that EI services helped the family (A) Know their rights, (B) Effectively communicate child's needs, (C) Help their children develop and learn.
- 5. Child Find, Ages Birth to 1.** % of infants/toddlers birth-1 with IFSPs compared to national data.
- 6. Child Find, Ages Birth to 3.** % of infants and toddlers birth-3 with IFSPs compared to national data.
- 7. Timeliness of IFSP.** % of eligible infants/toddlers with IFSPs with evaluation, assessment, and initial IFSP meeting, within 45-day timeline.
- 8. Early Childhood Transition.** % of toddlers exiting Part C, with timely transition planning for whom LA, within required timeline. (A) Developed IFSP with transition steps, (B) Notified SEA and LEA of toddler's potential eligibility, (C) Conducted transition conference.
- 9. Hearing Requests Resolved.** % of hearing requests resolved through resolution session settlement agreements.
- 10. Mediation Agreements.** % of mediations held resulting in mediation agreements.
- 11. State Systemic Improvement Plan.** SPP/APR includes comprehensive, ambitious, achievable, multi-year SSIP, with Phase I analysis, Phase II plan, Phase III implementation and evaluation, with stakeholder involvement in all phases, for improving results for infants/toddlers with disabilities and their families.



## Resources (cont.)

- [ECTA Part C SPP/APR Resources](#)
- [DaSy - The Center for IDEA Early Childhood Data Systems SPP/APR Resources](#)
- [Common Education Data Standards Connections](#)
  - Search “Part C Indicator.” You will get a list of all the Connections between Part C SPP/APR Indicators and the Common Education Data Standards (CEDDS).

# Links to previous B2B Webinars

- [Complete list of Back-to-Basics webinars](#)





# Upcoming IDC Events



Tuesday, September 26, 2017 · 3:00 PM - 4:00 PM Eastern Time

Virtual Interactive Meeting on Part C IDEA 618 Data Processes Toolkit



Thursday, October 26, 2017 · 4:00 PM - 5:00 PM Eastern Time

Back-to-Basics on the IDEA Section 618 Part C Data Collections—What You Need to Know About Collecting and Reporting Your Part C 618 State Data





## For More Information

**IDC** Visit the IDC website  
<http://ideadata.org/>



**Follow Us on Twitter**  
<https://twitter.com/ideadatacenter>



**Follow Us on LinkedIn**  
<http://www.linkedin.com/company/idea-data-center>



The contents of this presentation were developed under a grant from the U.S. Department of Education, #H373Y130002. However, the contents do not necessarily represent the policy of the U.S. Department of Education, and you should not assume endorsement by the federal government.

Project Officers: Richelle Davis and Meredith Miceli

