



Back-to-Basics on Part C Child Find—What You Need to Know About Indicators 5 and 6

Siobhan Colgan
Bill Huennekens
Sharon Ringwalt
Luis Romero

5/25/2017

Welcome to Back-to-Basics on Indicators 5 & 6 Child Find Part C



Siobhan Colgan, Bill Huennekens, Sharon Ringwalt,
Luis Romero



Participant Outcomes

- Increase understanding of IDEA Part C Indicators 5 and 6 child find, ages birth to 1 and birth to 3, to ensure high-quality data for State Performance Plan/Annual Performance Report (SPP/APR) reporting.
- Learn about available resources and supports for understanding and reporting Indicators 5 and 6.

Polls: Who is on the call?



Importance of Early Identification and Intervention

- Timely and early intervention is critical to child outcomes.
- States may have patterns of disproportionate identification
 - by age (infants vs. toddlers);
 - by district or region;
 - by referral source (community, parent, medical, etc.);
 - by child disability; or
 - by risk demographics (poverty, race/ethnicity, language, homelessness, etc.).



OSEP Focus on Child Find

- The Office of Special Education Programs (OSEP) has identified child find as one of four areas for Differentiated Monitoring and Support (DMS).
 - 8 states identified as needing intensive technical assistance
 - 22 states identified as needing targeted technical assistance
- Designation factors included:
 - child maltreatment rates/ Child Abuse Prevention and Treatment Act (CAPTA) data;
 - low birthweight rates;
 - Child Count rates; and
 - emerging needs (Zika, Neonatal Abstinence Syndrome [NAS], etc.).

Poll: Child Find Challenges





Measurement Table Language

- Indicator 5
 - Percent of infants and toddlers ages **birth to 1** with individualized family service plans (IFSPs) compared to national data
- Indicator 6
 - Percent of infants and toddlers ages **birth to 3** with IFSPs compared to national data
- Data source: 618 data (Child Count)
 - FFY 2015: Data from 618 data collected on a date between October 1 and December 1, 2015, and due on April 6, 2016

Overview to Part C Indicators 5 & 6

- Required indicators for APR/SPP.
- Results indicator.
- States set individual targets.
- States compare to national mean.
 - The national percentage takes into account state population and excludes jurisdictions and territories.
- Sampling is not allowed.
- Based on 618 Child Count data.

National Data: FFY 2015

Indicator 5. The percentage of infants/toddlers ages **birth to 1** with IFSPs compared to national data:

- National Mean: 1.20%
- Range: 0.57% to 4.57%

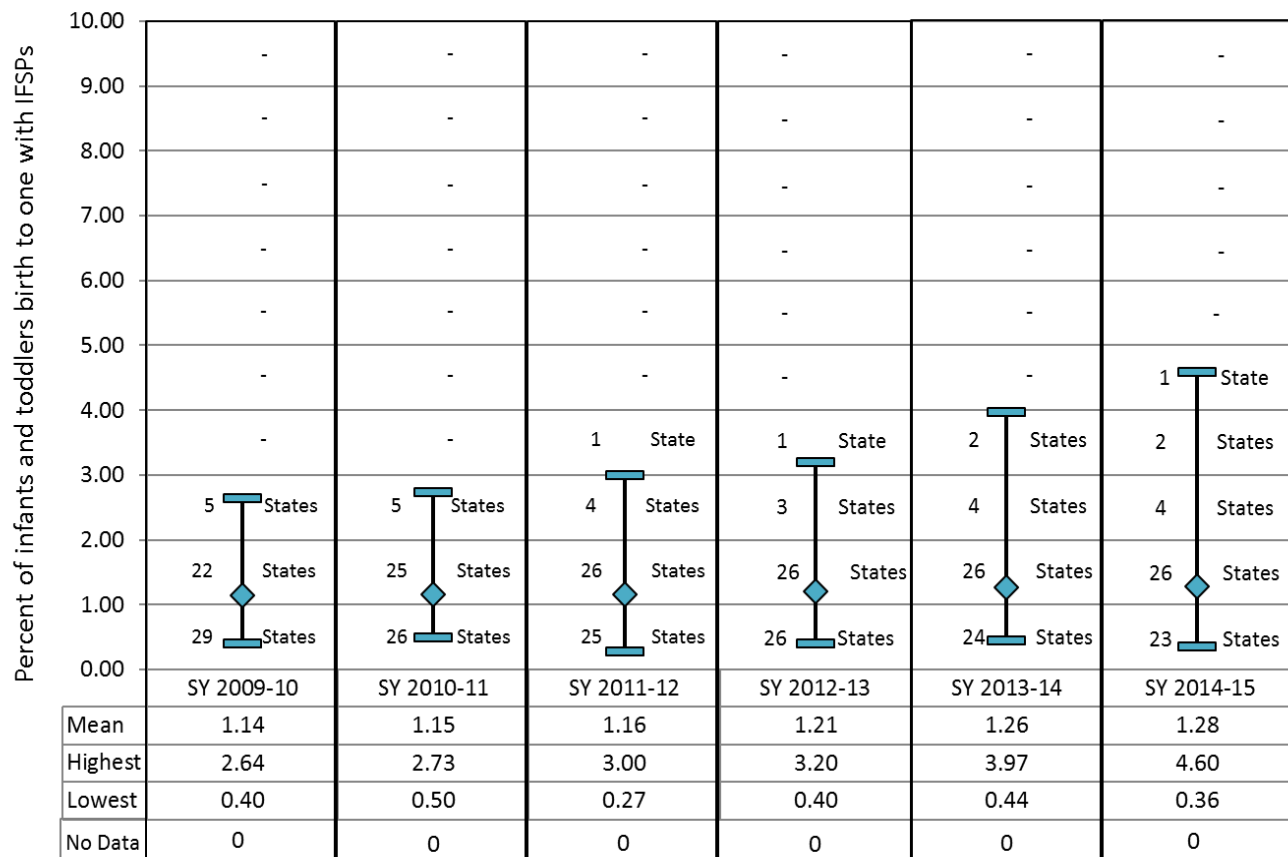
Indicator 6. The percentage of infants/toddlers ages **birth to 3** with IFSPs compared to national data:

- National Mean: 3.0%
- Range: 1.72% to 9.05%

National Picture of Child Find Data: Indicator 5 (Ages Birth to 1)



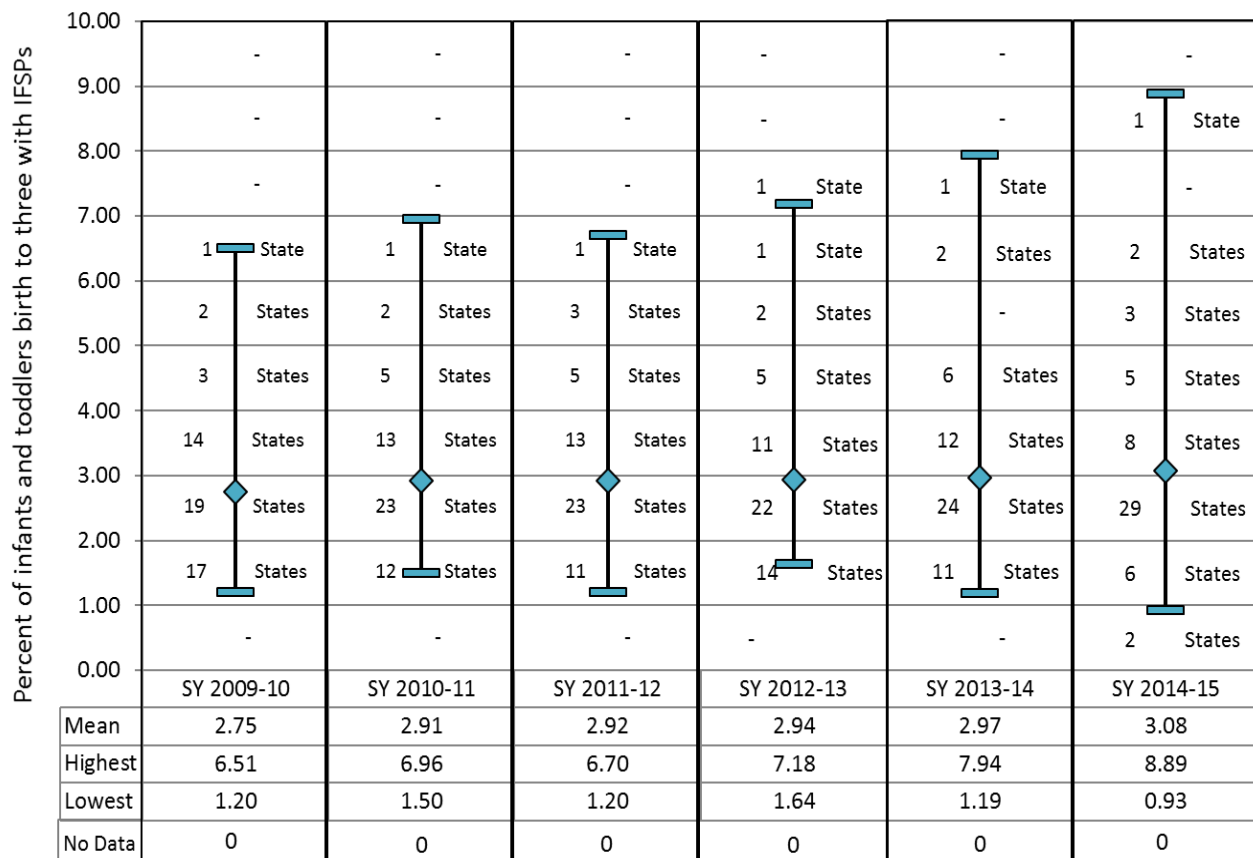
Trends - Six Years of Indicator C5 Data
Percent of infants and toddlers birth to one with IFSPs



National Picture of Child Find Data: Indicator 6 (Ages Birth to 3)



Trends - Six Years of Indicator C6 Data
Percent of infants and toddlers birth to three with IFSPs





Data Source for Indicators 5 & 6: 618 Data Collection

Child Count and Settings

- Submitted to OSEP via the *EDFacts Metadata and Process System (EMAPS)* manually
 - Child Count and Settings by Age
 - Child Count and Settings by Race/Ethnicity
 - Child Count by Gender
 - At-Risk Child Count
- Due the first Wednesday in April



U.S. Department of Education

Search...

Student Loans

Grants

Laws

ABOUT ED / INITIATIVES

The *EDFacts* Initiative

EDFacts is a U. S. Department of Education initiative to put performance data at the center of policy, management and budget decisions for all K-12 educational programs. *EDFacts* centralizes performance data supplied by K-12 state education agencies (SEAs) with other data assets, such as financial grant information, within the Department to enable better analysis and use in policy development, planning and management. The purpose of *EDFacts* is to:

- Place the use of robust, timely performance data at the core of decision and policymaking in education.
- Reduce state and district data burden and streamline data practices.
- Improve state data capabilities by providing resources and technical assistance.
- Provide data for planning, policy, and management at the federal, state, and local levels.

EDFacts Overview

- *EDFacts* Overview PDF
- *EDFacts* Discussion Points Word

EDFacts Data Governance

- *EDFacts* Data Governance Board (EDGB) Overview PDF
- EDGB Charter Word

EDFacts System Documentation

- *EDFacts* Submission System (ESS) File Specifications
- *EDFacts* Business Rules Guide
- ESS Release Notes
- ESS User Guide PDF
- *EDFacts* Workbook
- SY 2015-16 *EDFacts* Charter Workbook PDF
- *EDFacts* FAQs PDF

More Resources

[EDFacts Log-In \(ED staff only\)](#)

[EDEN Submission System Log-In \(State users and ED staff\) and EDFacts Log-In \(State users with EDFacts access\)](#)

[EDFacts Metadata and Process System Log-In](#)

[CCD Data Management System \(DMS\) Log-in \(All users\)](#)



EMAPS

EDFacts Metadata and Process System

Username

Password

Sign In





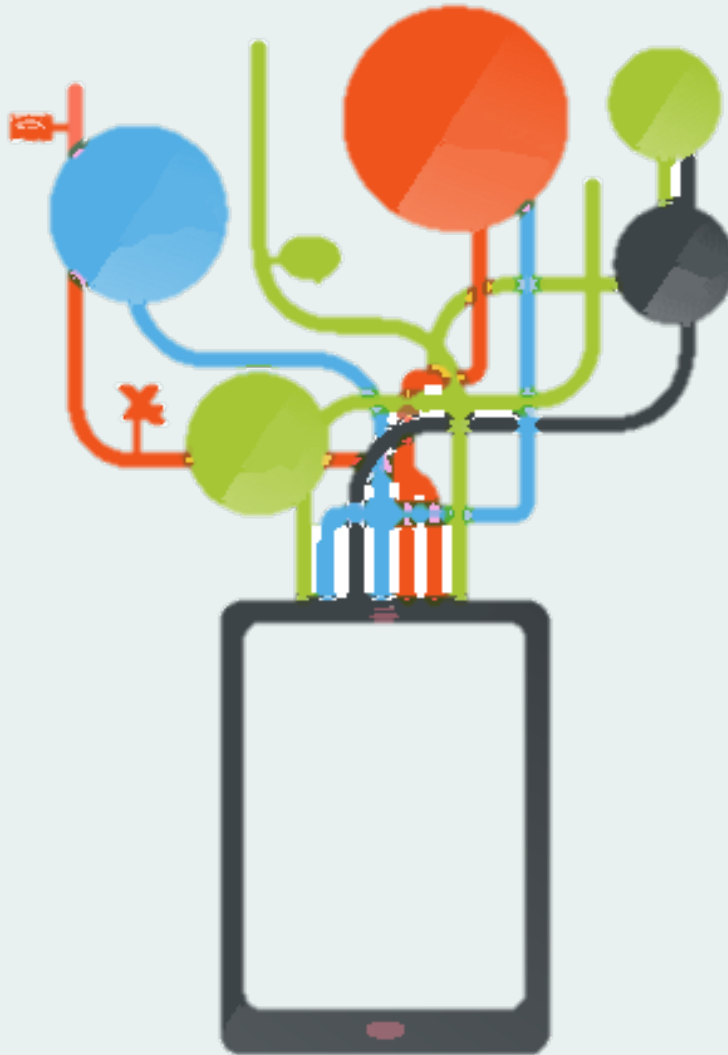
618 Data Sources

- State
 - Data system connected live to local providers' systems used to manage services (can be unit or child record system).
 - Monitoring system (can be aggregate collections) that collects data from local system used to manage services.
- Time frames—when are the data typically available?
 - Depends on their system; if they have a live system, data are made available on December 2.
 - If an aggregate collection, it could be weekly or monthly.

618 Data Collection Issues & Challenges

- Access to data system (reporting, access, delays)
 - Unit record compared to aggregate systems
- Time frame differences (APR vs. 618)
- Wide variety of systems with different levels of technical sophistication
- Point-of-entry challenge that impacts data quality
- Feedback loop challenges with local providers

POLL: 618 Data Sources



POLL: Data Collection Issues & Challenges





Context of the Data Used in the Indicators

- Point-in-time count vs. cumulative child count impacts percentage served.
- State enrollment patterns can impact interpretation of data.
- Territories have to use alternate population data.

Connecting Indicators 5 & 6 With 618 Data Collection



- Annual Performance Reports (APRs)
 - OSEP provides prepopulated data from *EMAPS* collection into GRADS360.
 - States can overwrite or correct data from OSEP, with an explanation.

SPP/APR

Part C – Child Find



Indicator 5. The percentage of infants/toddlers ages birth to 1 with IFSPs compared to national data

Indicator 6. The percentage of infants/toddlers ages birth to 3 with IFSPs compared to national data

Calculations

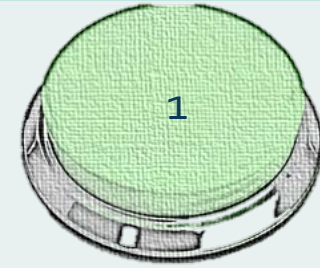
- Percent is equal to the number of infants and toddlers with IFSPs
 - Birth to 1 for Indicator 5
 - Birth to 3 for Indicator 6
- divided by the population of infants and toddlers
 - Birth to 1 for Indicator 5
 - Birth to 3 for Indicator 6
- times 100
- compared to the national data.

Q & A

- What are your questions for the experts on Child Find?



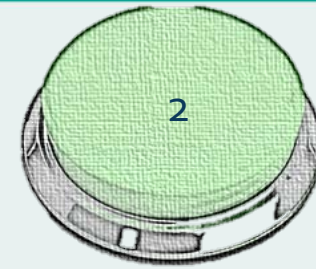
Q & A



- What is the difference between the point-in-time child count data and the cumulative child count data?

Q & A

- How does a state's eligibility criteria have an impact on its child count/child find data?



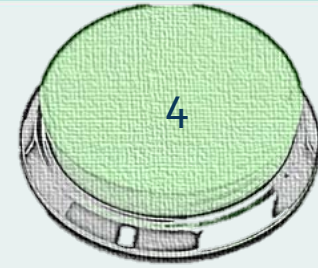
Q & A

- My state's child find numbers are low. How do we know where to target our efforts?



Q & A

- Is there flexibility in the 618 child count categories?



OSEP Resources

<https://osep.grads360.org/#program>



The screenshot shows the OSEP GRADS360 website in an Internet Explorer browser window. The address bar displays the URL <https://osep.grads360.org/#program>. The browser's menu bar includes File, Edit, View, Favorites, Tools, and Help. The website's header features the GRADS logo and a navigation menu with 'Home' and 'Collaborate' tabs. Below the navigation menu, a horizontal bar lists various program areas: Home, About, Highlighted Resources, SPP APR Resources, Fiscal, Grants, SSIP, and Monthly Update. The main content area is titled 'Home' and includes a breadcrumb trail 'Home > Overview > Home'. A large banner image displays the text 'Welcome OSEP Office of Special Education Programs' alongside four photographs of diverse children and adults. Below the banner, a section titled 'Welcome to the OSEP GRADS360 Site' provides information about the site's resources. To the right, a 'State Profiles' section is visible. The Windows taskbar at the bottom shows the Start button and several open applications, including Document, Transit, GRAD, and FFY 20...

OSEP SPP/APR Resources Measurement Tables



Home > Overview > SPP APR Resources - Internet Explorer

https://osep.grads360.org/#program/spp-apr

File Edit View Favorites Tools Help

Page Safety Tools

Home > Overview > SPP APR Resources

SPP/APR Resources

Part B

- [Part B State Profile Page](#)
- [Part B 2016 SPP/APR Memo](#)
- [Part B 2016 Measurement table](#)
- [Part B 2016 Instructions](#)
- [Part B 2016 Related Requirements](#)

Part C

- [Part C State Profile Page](#)
- [Part C 2016 SPP/APR Memo](#)
- [Part C 2016 Measurement table](#)
- [Part C 2016 Instructions](#)
- [Part C 2016 Related Requirements](#)
- [Part C 2016 ICC Form](#)
- [National Data for Indicators C5/C6](#)

General Resources

- Status of Indicator Prepopulation** Prepopulation data will be loaded for all indicators except Part B Indicator 3 by Thursday, December 17th. We appreciate your patience, as we recognize that this is later than initially planned, and we hope that everyone will continue to find that the prepopulated data helps you complete your SPP/APR. We are

Program Office Links

[Find Your State Contact](#)

[Building the Legacy: IDEA 2004](#)

[RDA](#)

[U.S. Department of Education](#)

125%

Start | Word | Word | Transi... | GRAD... | Inbox... | 1 Remi... | Sticky... | C:\Use... | C:\Use... | C:\Use... | FFY 20... | 10:35 AM



Resources

- Your [IDC State Liaison](#) can connect you with any of the following:
- *Part C IDEA 618 Data Processes Toolkit*
- [*618 Data Pre-submission Edit Check Tools*](#)
- [*IDEA Data Training Modules*](#)
- IDC Data Manager Coaching Program
- *ITCA-Child Count Chart*: <http://www.ideainfanttoddler.org/pdf/2015-Child-Count-Data-Charts.pdf>
- EDFacts Partner Support Center (PSC):
Toll Free: 877-457-3336
(877-HLP-EDEN)
E-mail: EDEN_SS@ed.gov



Contact For More Information

- Siobhan Colgan, siobhan.colgan@unc.edu
- Bill Huennekens, bill.huennekens@aemcorp.com
- Sharon Ringwalt, sharon.ringwalt@unc.edu
- Luis Romero, luisromero@westat.com
- Or contact your [IDC State Liaison](#)



For More Information



Visit the IDC website

<http://ideadata.org/>



Follow us on Twitter

<https://twitter.com/ideadatacenter>



Follow Us on LinkedIn

<http://www.linkedin.com/company/idea-data-center>

This presentation was developed under a grant from the U.S. Department of Education, #H373Y130002. However, the contents do not necessarily represent the policy of the U.S. Department of Education, and you should not assume endorsement by the federal government.

Project Officers: Richelle Davis and Meredith Miceli

